

AESOP Congress Istanbul 2025: Planning as a transformative action in an age of planetary crisis
SS_10 Shaping regional futures toward sustainable transitions: community involvement in visioning and implementation

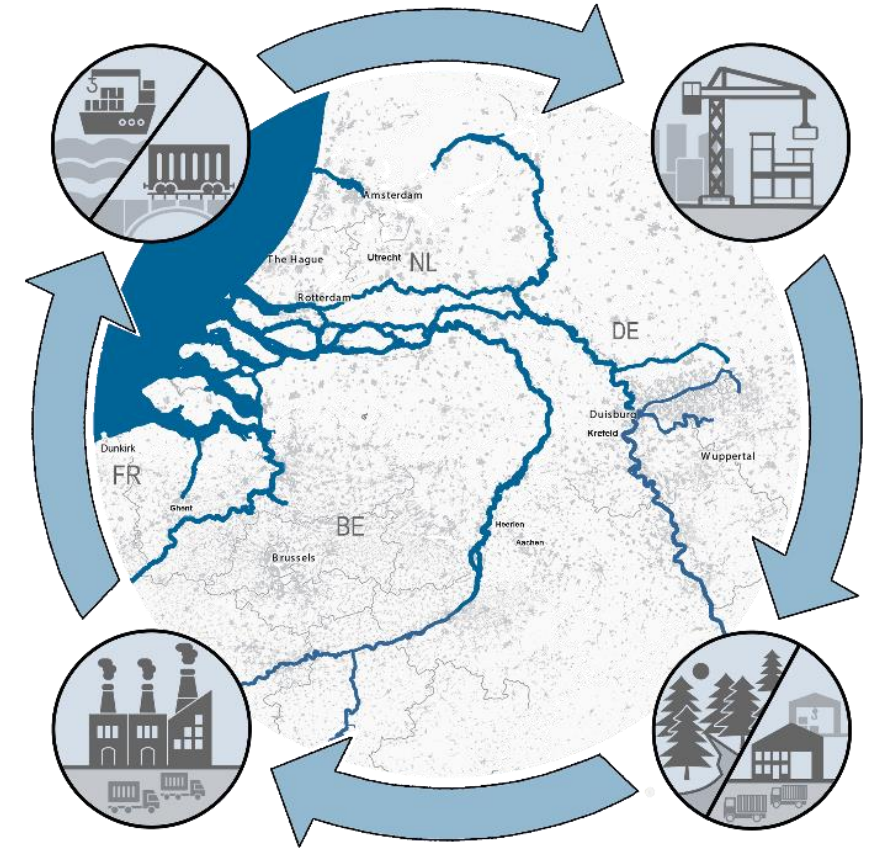
ASSETs for circular futures: boosting the transition to circular construction in the Eurodelta

Fabio Bayro Kaiser¹, Dagmar Keim², Christa Reicher¹, Alexander Wandl³
bayrokaiser@staedtebau.rwth-aachen.de

¹RWTH Aachen University

²City of Amsterdam

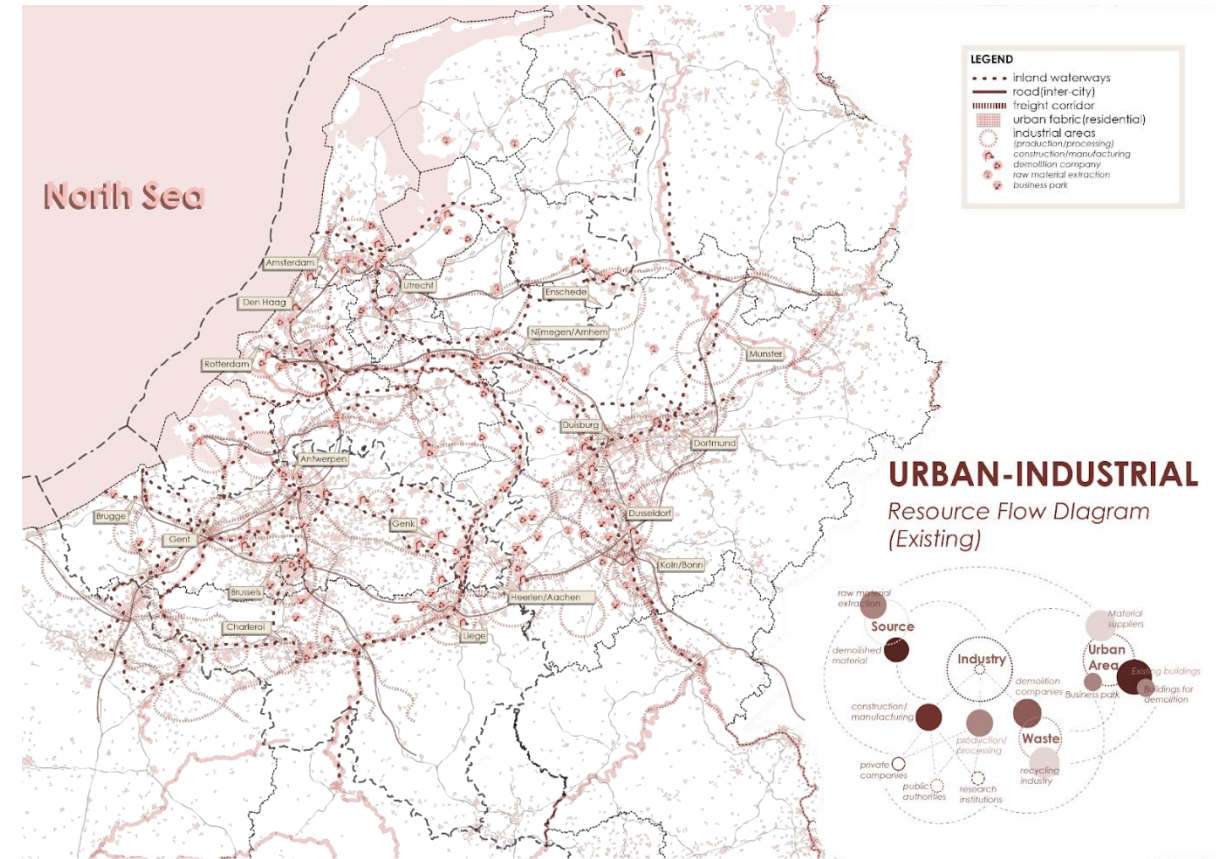
³TU Delft



08.07.2025

The Eurodelta context and challenges

- The Eurodelta is a dynamic cross-border region with strong economies, but it is facing growing environmental and social pressures.
- High resource use, linear flows and fragmented governance threaten its long-term sustainability.
- Inconsistent efforts and conflicting land use plans lead to inefficiencies and prevent inclusive, forward-looking planning.
- Integrated spatial strategies can unlock synergies across cities, ports, and rural areas.
- EU-backed, collective action and community buy-in are vital for a just, circular future.



Source: (Srikumam , 2025)

ASSET: Boosting a circular built environment in the Eurodelta

- ASSET uses a combination of circular economy and spatial design principles to drive transformative regional change.
- It addresses urgent environmental and social issues by implementing comprehensive, forward-looking strategies.
- A variety of stakeholders, ranging from citizens to policymakers, play an active role in shaping and benefiting from the project.

Keywords: Circular built environment; spatial strategies; Eurodelta; collaboration; ASSET



Interreg



Co-funded by
the European Union

North-West Europe

ASSET



Objectives

Develop a strategy and action plan to understand the spatial implications of the circular transition of the built environment for the Eurodelta and to come up with innovative solutions on different scales.

asset.nweurope.eu

Source: (Bayro Kaiser, 2024)

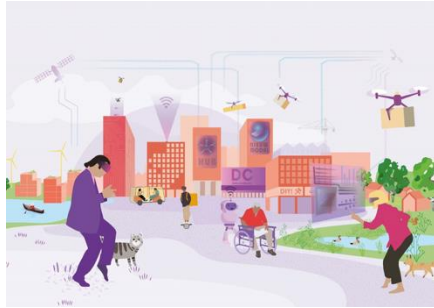
Framework and tools for action (1)

Space for a circular economy Uncertainty

Global Corporations: market driven



Highspeed world: fragmentation



Green state: sustainability first

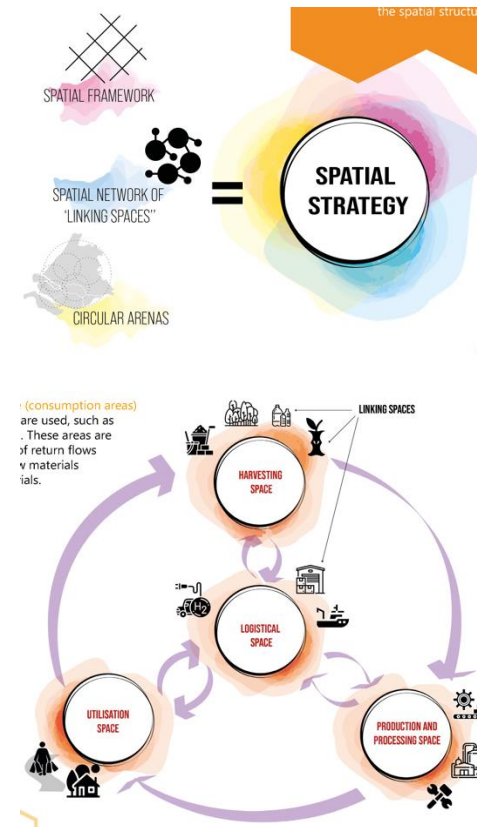


Regional roots: local communities

Source: PBL 2023

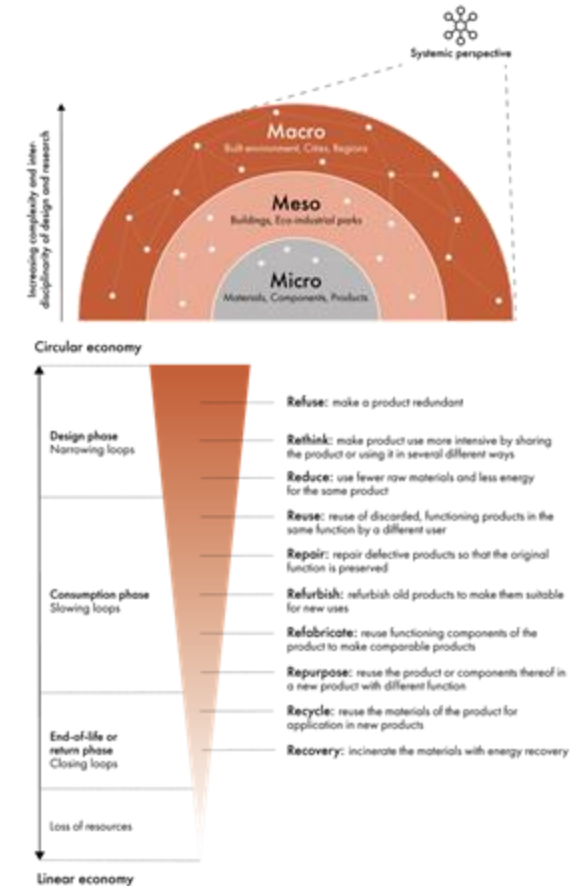
ASSET Meet & Leams: <https://sure-eurodelta.eurometrex.org/>

Frameworks, linking spaces, arenas



Source: PZH, BVR 2022

Translation into space



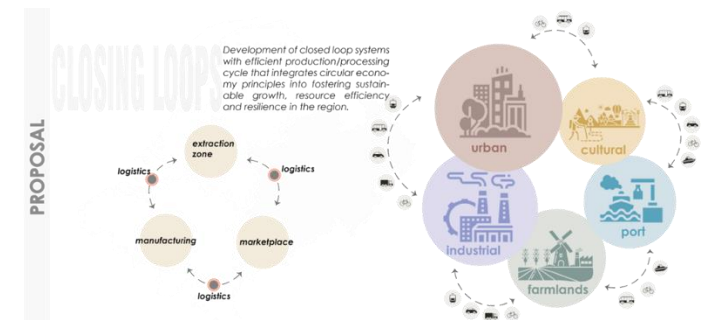
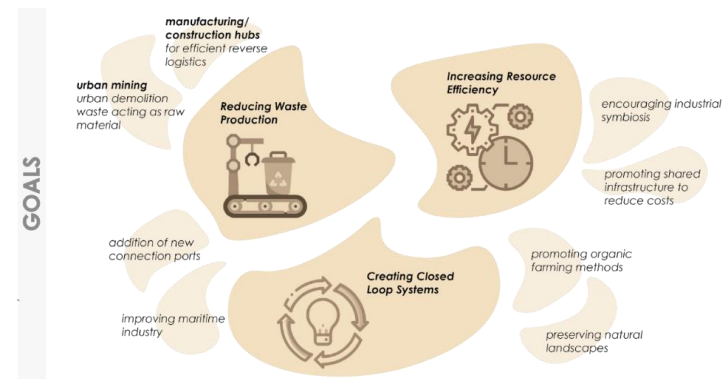
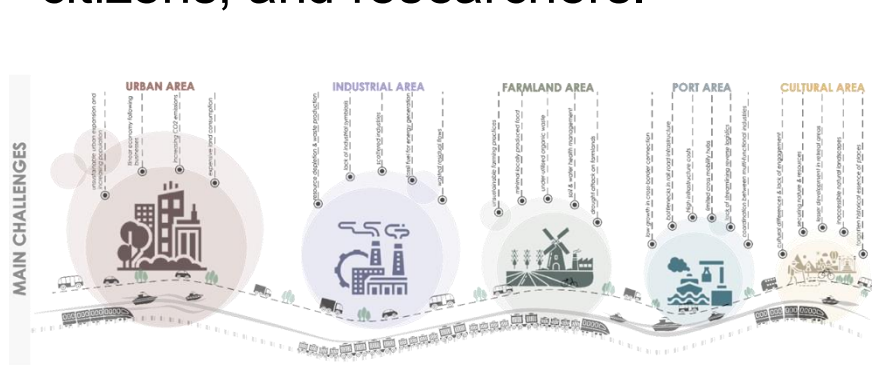
Source: Ocampo et al 2024

Framework and tools for action (2)

- Scenario thinking and design transform big ideas into practical and adaptable spatial strategies.
- Cities and regions workshops establish a connection between visions and real community needs, fostering a sense of shared ownership.
- This is an integrated, multi-scale approach that is co-created by designers, policymakers, citizens, and researchers.



Source: (Bomas , 2024))



Source: (Srikumam , 2025)

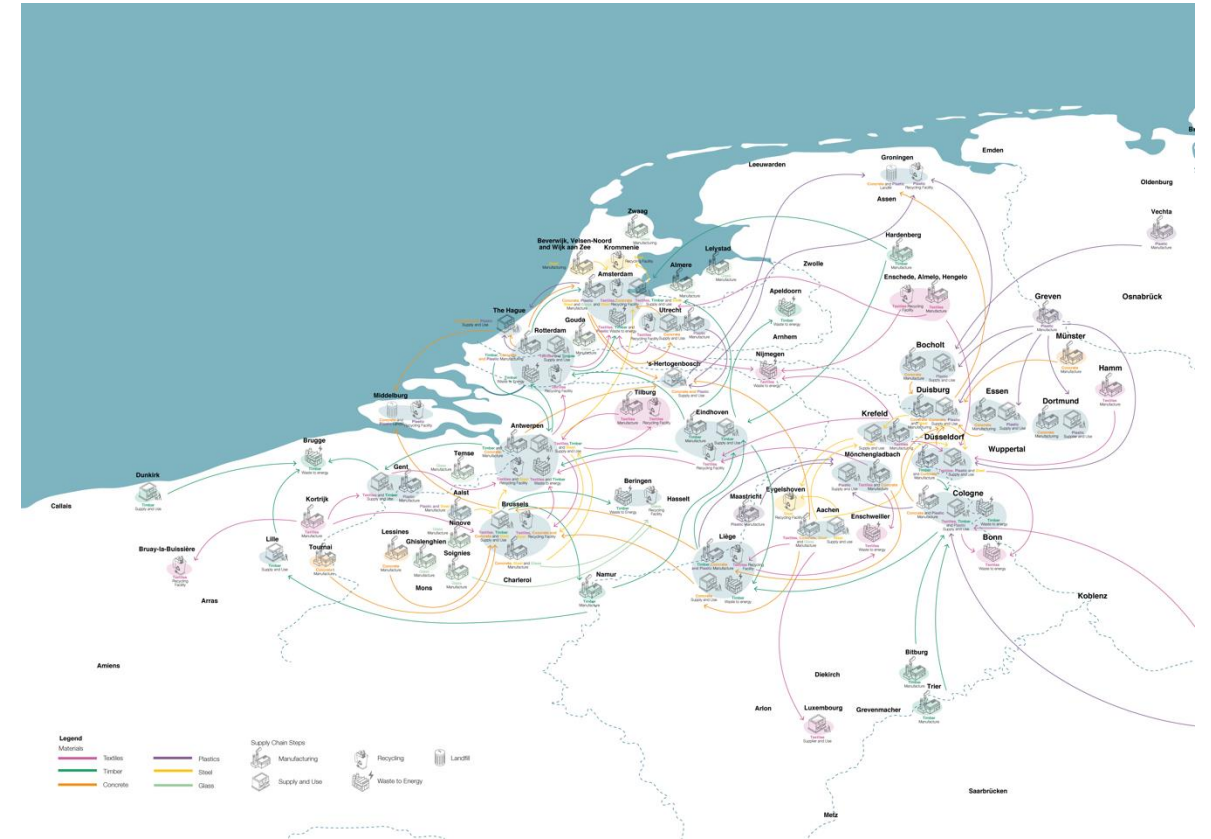
ASSET on Tour



Source: (Bayro Kaiser , 2024)

ASSETs (a): Biobased and urban material flows

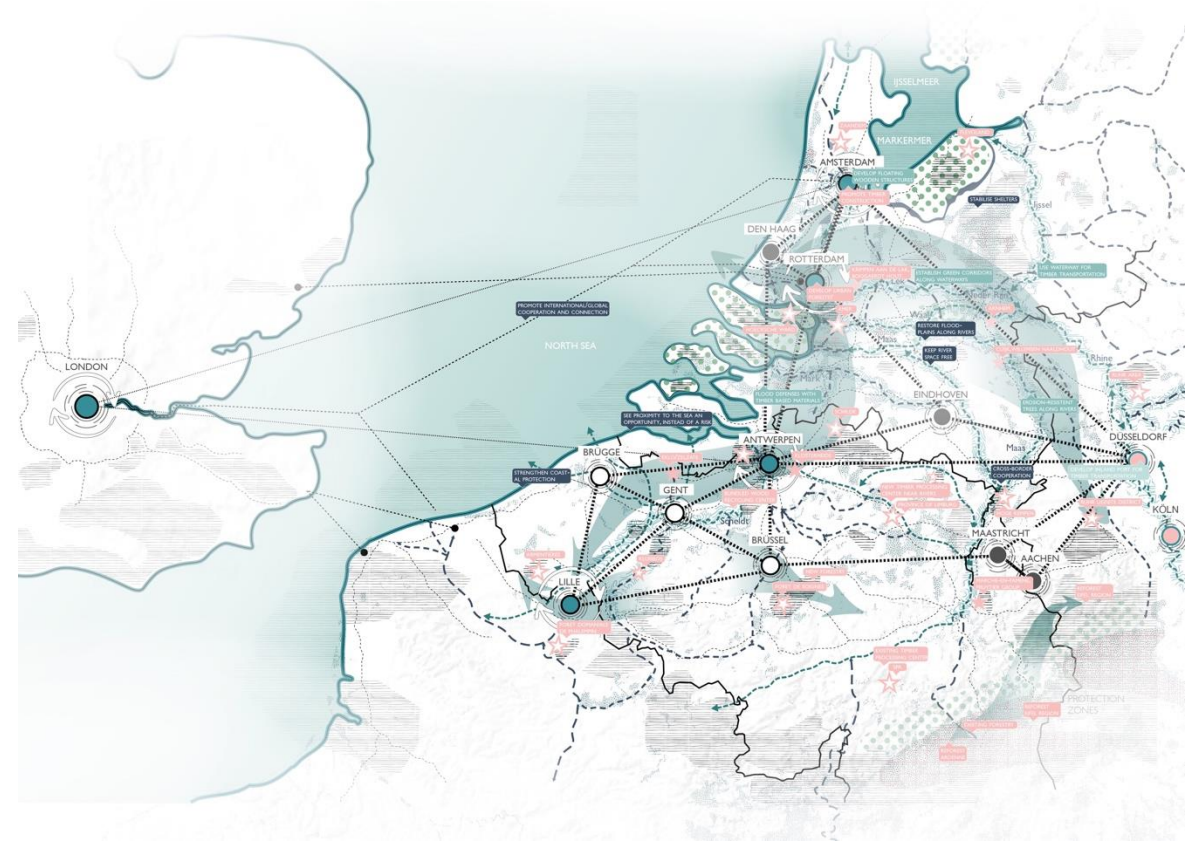
- Links rural biobased corridors and urban mining hubs to create local, circular material flows.
- Strengthens self-sufficiency, reduces emissions, and supports regenerative rural and resilient urban economies.
- Engages farmers, foresters, municipalities, builders, and local innovators in shared systems.



Source: (Barbosa e Silva , 2025)

ASSETs (b): Logistics and cross-border connectivity

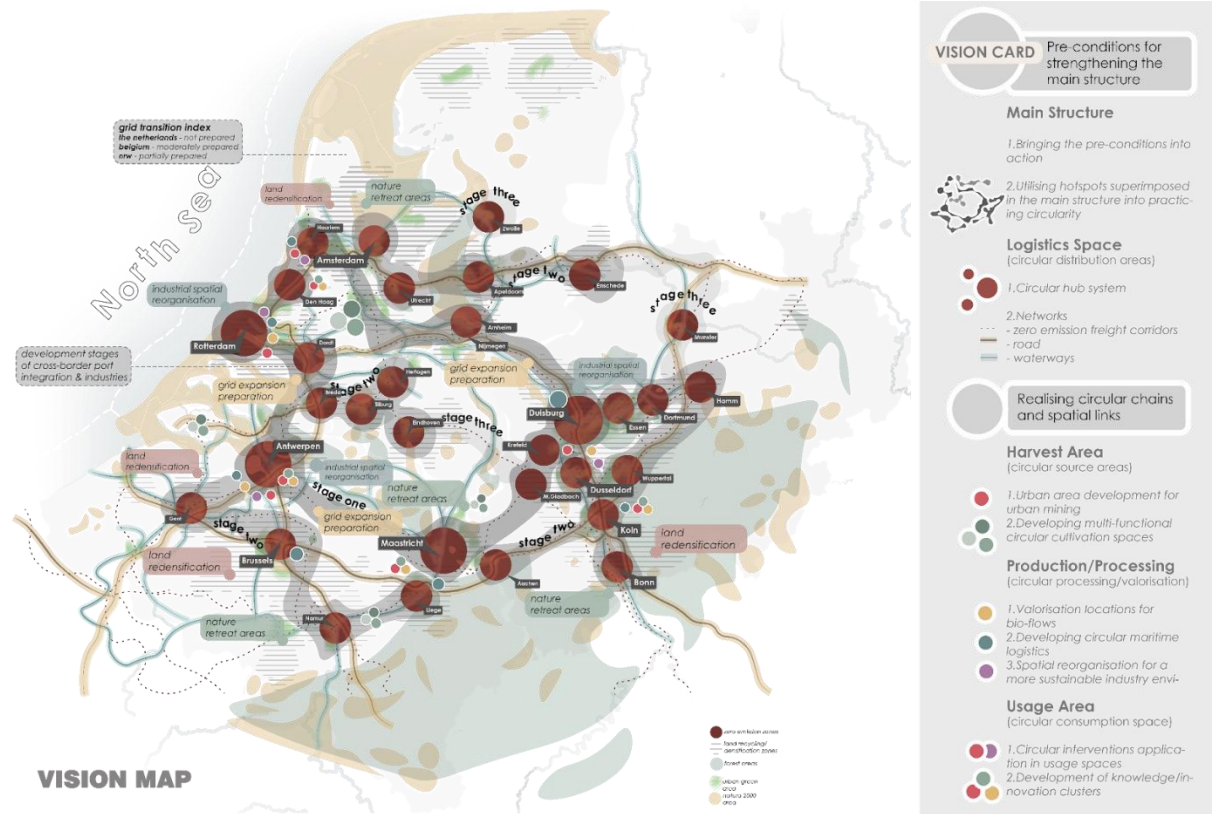
- Builds clean, multimodal transport networks that link production, consumption and reuse across the region.
- Integrates industry, ports and research hubs into a cross-border, symbiotic system that is aligned with EU goals.
- Strengthens economic ties, reduces environmental impact and engages with logistics, industry and regional planners.



Source: (Pauls, 2025)

ASSETs (c): Knowledge and governance for just transition

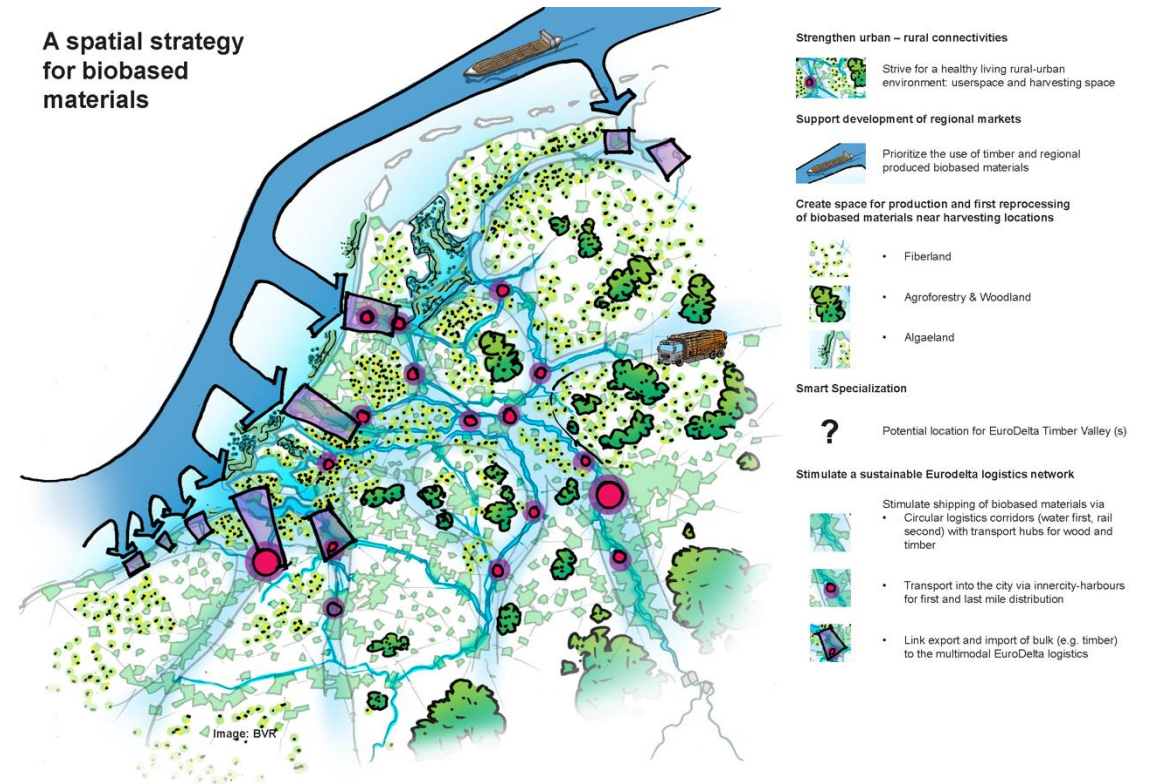
- Creates transregional knowledge hubs to drive innovation in materials, design and policy.
- Establishes inclusive governance frameworks that build trust and shared ownership of the transition.
- Strengthens skills and empowers future generations by involving researchers, civic groups, authorities, and communities.



Source: (Srikumam , 2025)

1. Biobased material spatial strategy

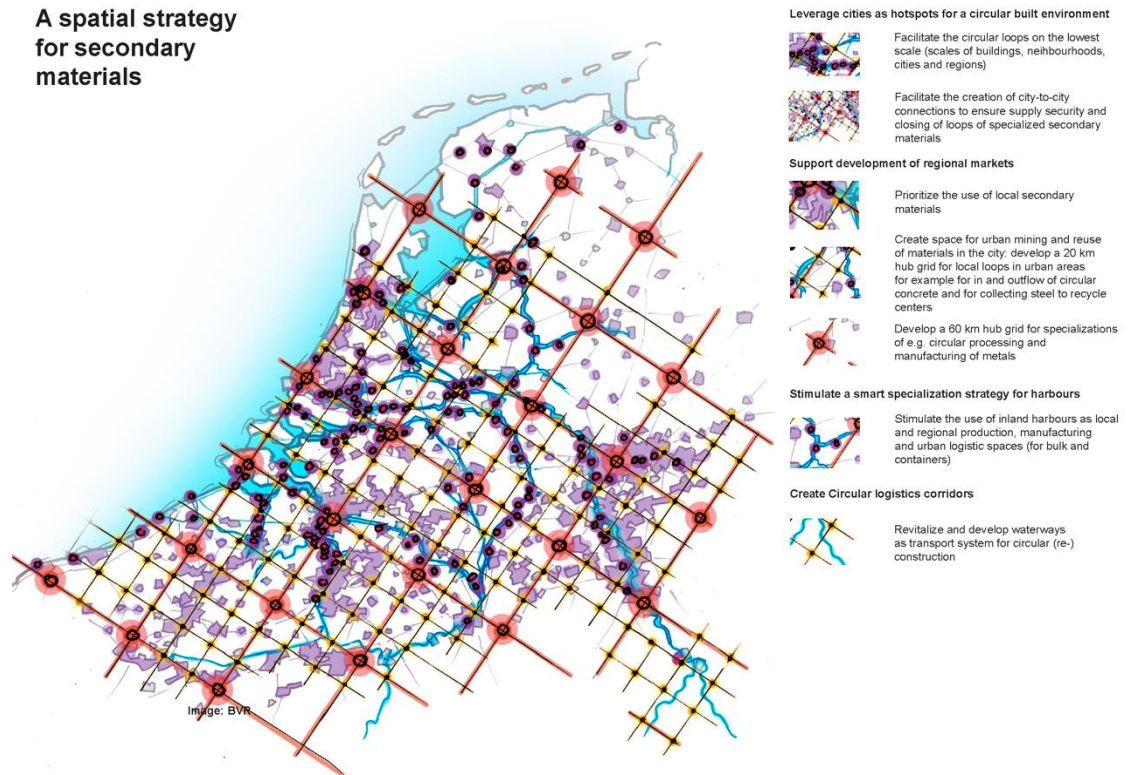
- Illustrates timber and biobased corridors that connect rural and urban areas.
- Strengthens local economies, supports biodiversity and promotes sustainable land use.
- Reduces emissions by enabling planners, producers and developers to create short supply chains.



Source: (Bomas, 2025)

2. Secondary materials spatial strategy

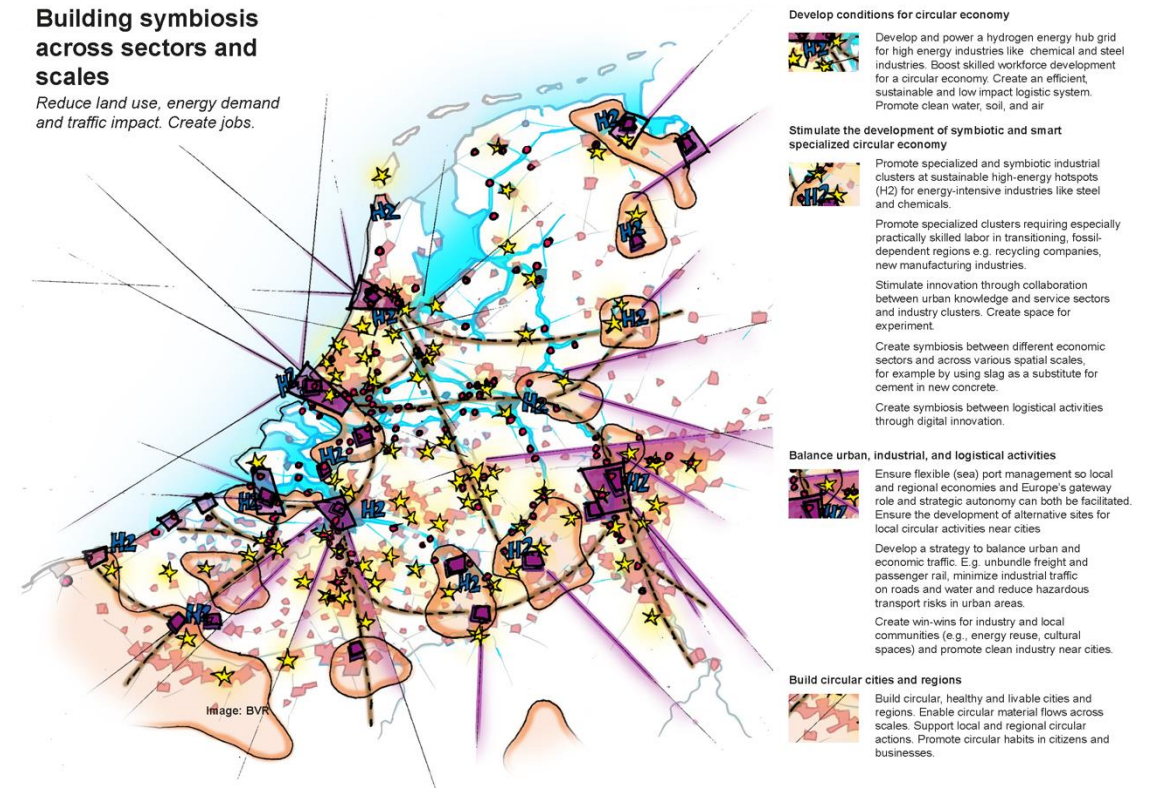
- It shows urban networks for the local recovery, processing and reuse of materials.
- It strengthens city economies, supports circular value creation and fosters autonomy.
- It enables affordable and equitable construction driven by cities, innovators and communities.



Source: (Bomas, 2025)

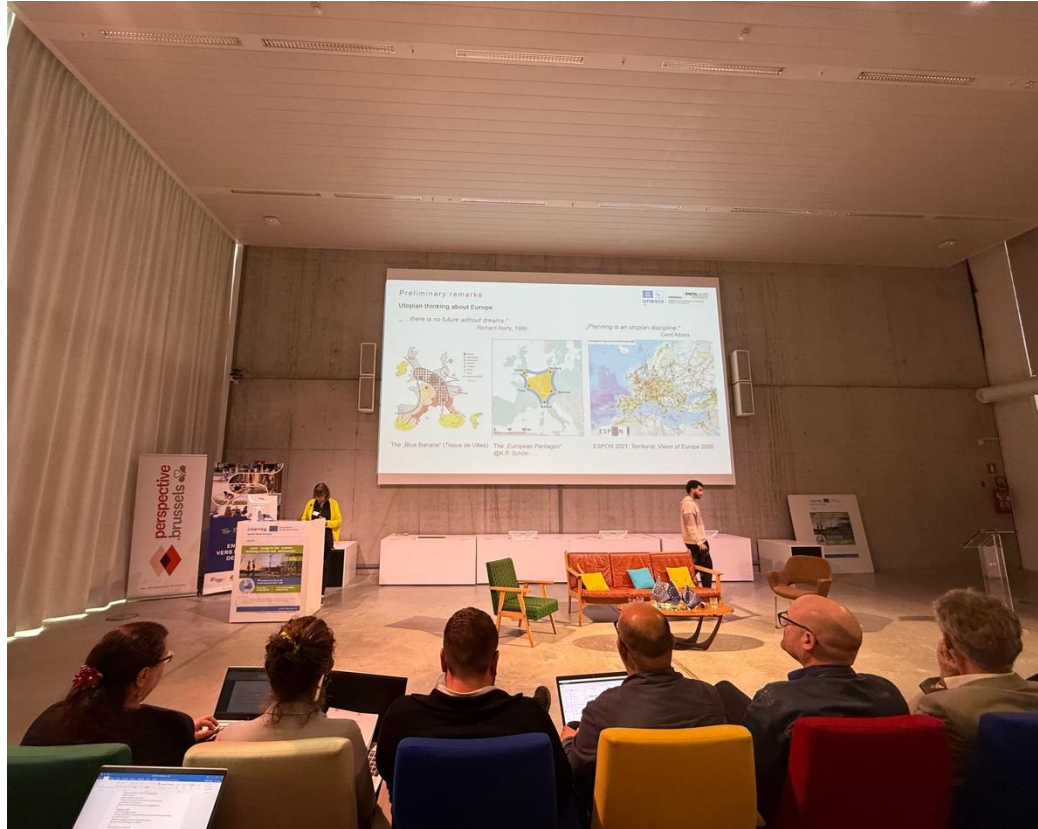
3. Cross-sectoral symbiosis spatial strategy

- Maps cross-sector networks that connect industry, ports, and research clusters across the region.
- Promotes shared resources, integrated economic strategies, and joint innovation to increase resilience.
- Reduces environmental impacts while supporting diverse transitions coordinated by industry and public partners.



Source: (Bomas, 2025)

The Eurodelta Alliance

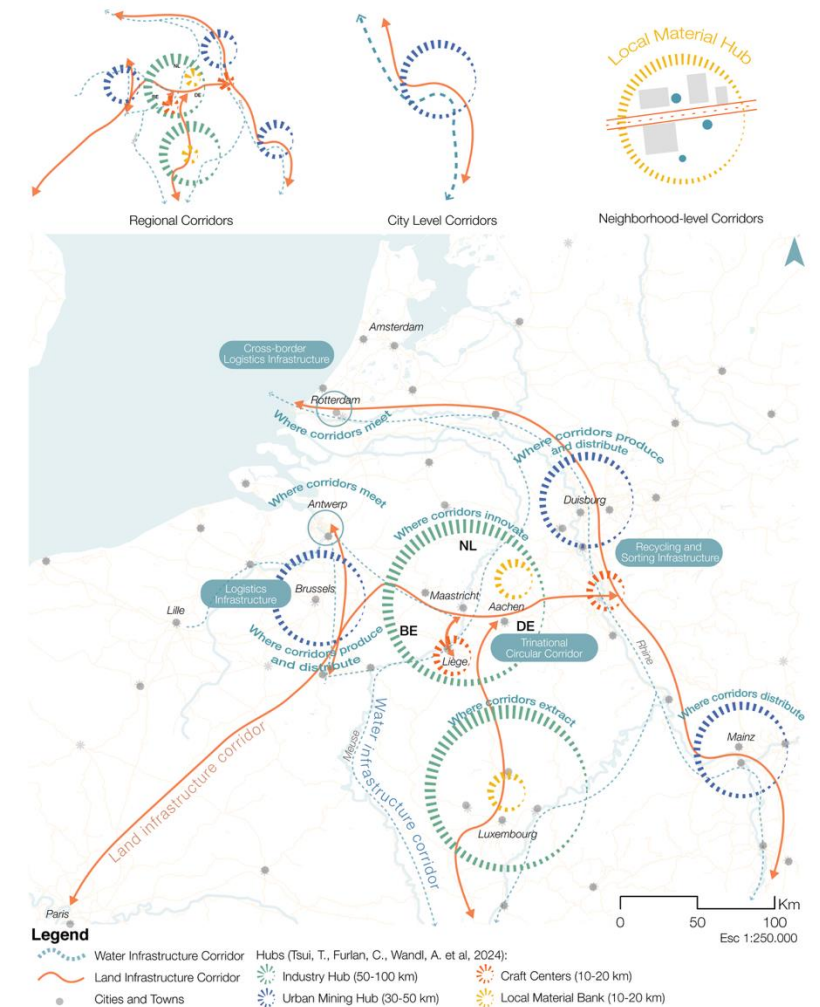


Source: (Bayro Kaiser, 2025)

Source: (Benamar, 2025)

Discussion: Challenges and opportunities

- Economic feasibility and policy support must be strengthened for a successful rollout.
- Governance fragmentation across borders requires proactive institutional cooperation.
- Social equity must be embedded more deeply to ensure that no communities are left behind.
- Static strategies must evolve into flexible systems that can respond to shocks.
- Sustained leadership and collaboration are needed from all public and private actors.



Source: (Barbosa e Silva , 2025)

Conclusion: ASSETs for a circular Eurodelta

- ASSET unifies local actions into a clear, community-driven regional strategy, fostering an inclusive and regenerative Eurodelta.
- It establishes the region as a global exemplar of circular, future-ready development, based on co-creation and shared responsibility.
- A circular Eurodelta requires integrated, cross-border strategies rather than isolated experiments.
- Linking rural timber flows, urban mining and clean logistics creates a robust and equitable regional system.
- A truly circular future depends on collective action, trust, and commitment from every sector and community.

Thank you kindly for your attention!

Fabio Bayro Kaiser¹, Dagmar Keim², Christa Reicher¹, Alexander Wandl³
bayrokaiser@staedtebau.rwth-aachen.de

¹RWTH Aachen University

²City of Amsterdam

³TU Delft

08.07.2025

